

The Beaumont



THE BEAUMONT

The award-winning Beaumont is one of London's smartest five-star luxury hotels, superbly located on a quiet garden square close to the finest shops, galleries and museums of Mayfair, Marylebone, St James's and the West End.

Grand in style yet intimate and welcoming, its design is inspired by the great Art Deco hotels of the 1920s, with beautifully appointed rooms and public areas, including the glamorous Colony Grill Room restaurant, the stylish Magritte Bar, Gatsby's Room for all-day dining and an elegant spa and gymnasium.



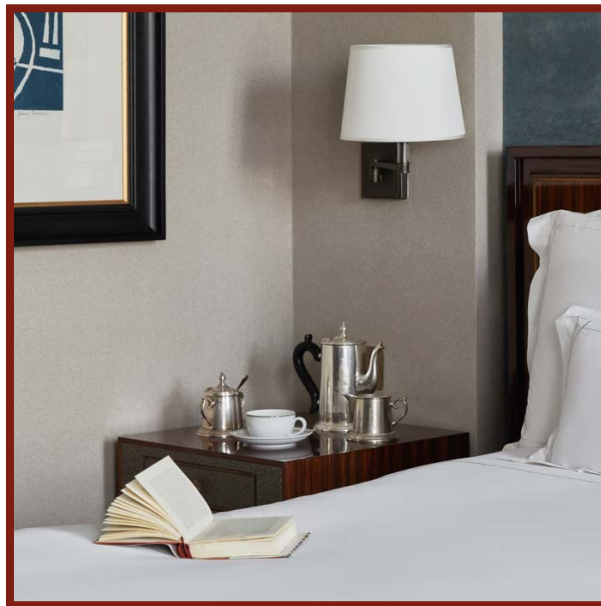






THE BEDROOMS

All the rooms at The Beaumont have been designed with the guest's comfort foremost in mind. They feature large hallways, sliding internal doors for additional privacy, ample wardrobes and sleek Art Deco bathrooms. All have king-size beds, which can be reconfigured as twins.







THE SUITES

The Beaumont has 11 studios and 10 one-bedroom suites, including Turner Prize-winner Antony Gormley's extraordinary inhabitable sculpture, ROOM, plus The Roosevelt, the opulent and hugely versatile presidential suite, which can be opened up to occupy the entire fifth floor.

All suites feature works of art from the hotel's extensive collection, large bathrooms, personally selected books and plentiful wardrobe space; some can be connected for groups of families and friends.

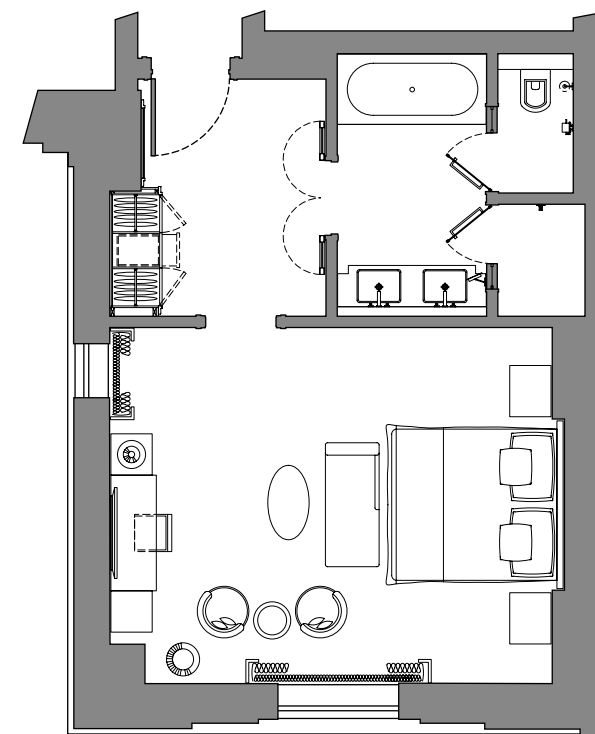




STUDIOS

Generously proportioned, the Studios feature comfortable seating and dressing areas, large bathrooms and private hallways. Original works of art abound, with a wide selection of classic movies to watch and books to read.

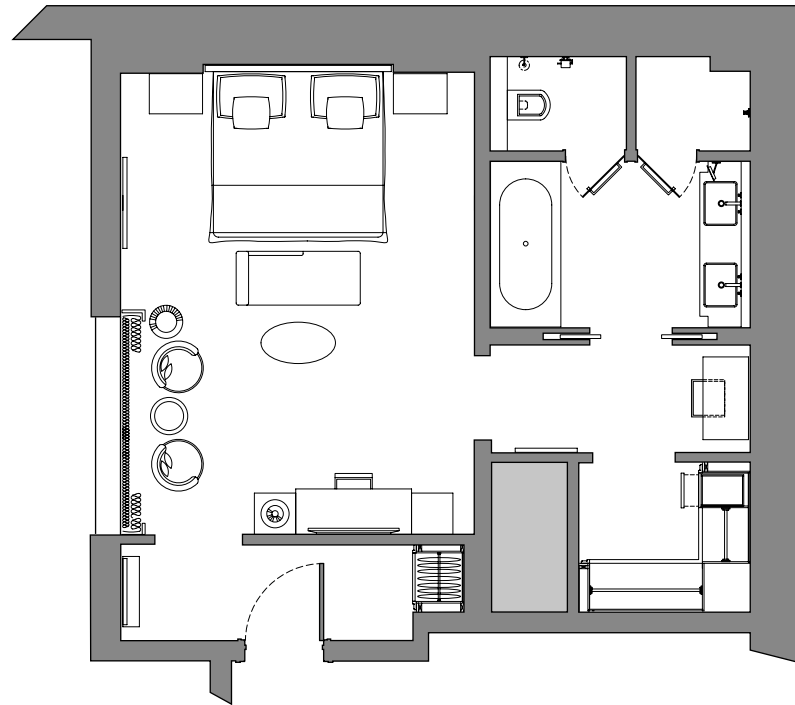
The Superior Studios each have their own unique features: some have separate dressing areas, some a private terrace, and all have views over the garden square or the rooftops of Mayfair.



Studios
Total 4
38 - 43m² (410 - 440sq ft)

A typical floor plan

SUPERIOR STUDIOS

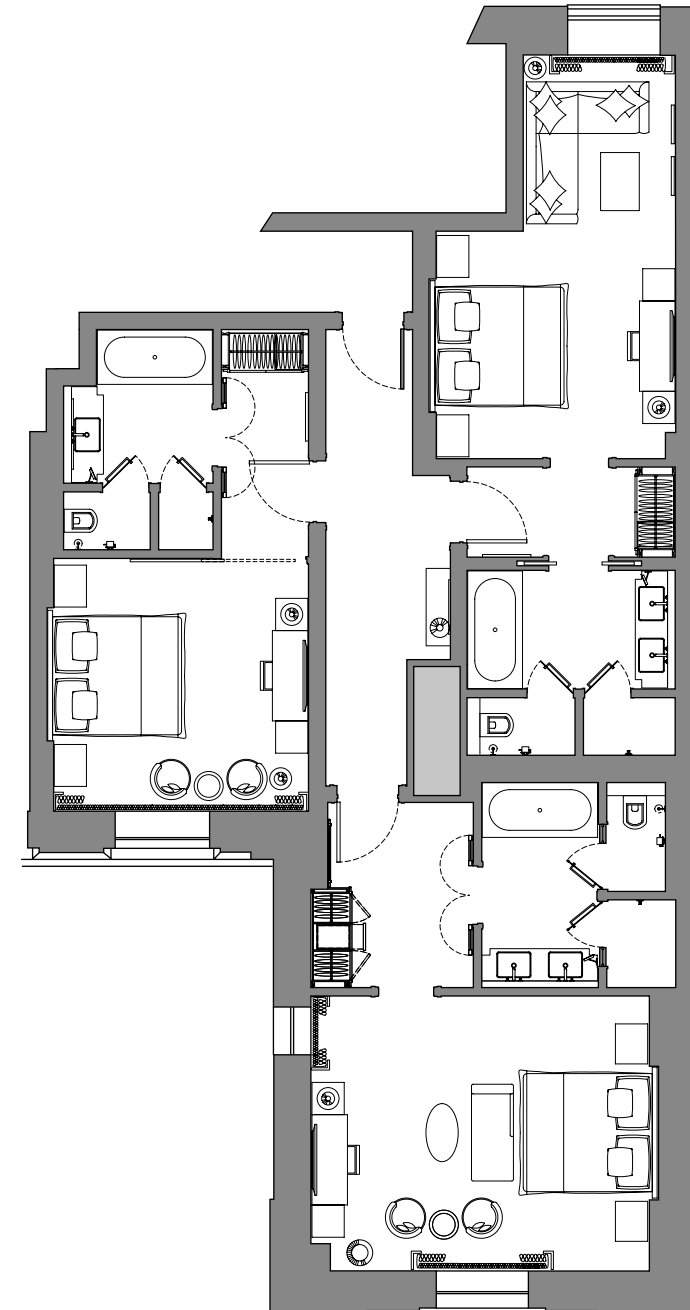


Superior Studios
Total 7
44 - 53m² (475 - 570 sq ft)

A typical floor plan



A STUDIO WING



A Studio Wing
Up to 2 Studios and a Superior
Bedroom can be combined into a
totally private space
110m² (1,185 sq ft)

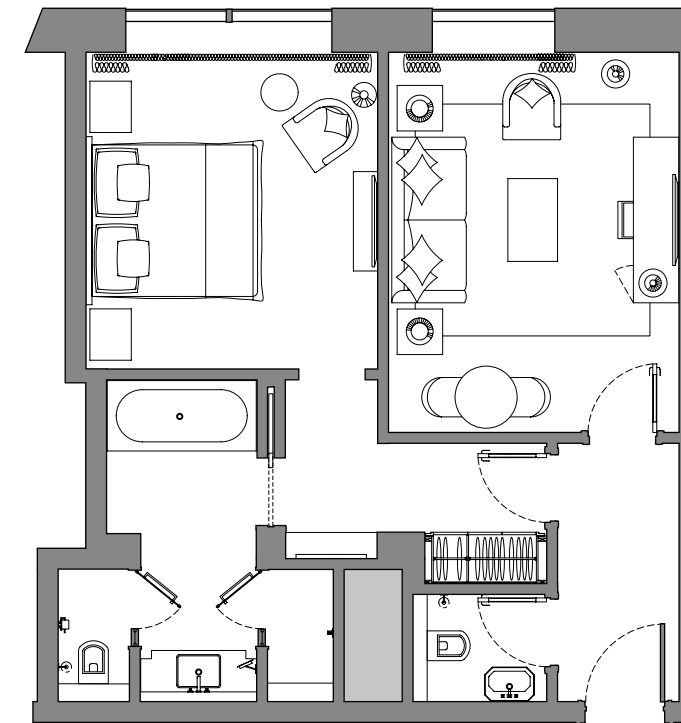






CLASSIC SUITES

The Beaumont's Classic Suites, with their soft Art Deco colour palette and luxurious finishes, offer a peaceful, quiet retreat, with ample space for entertaining, meetings, or simply relaxing. With luxurious sofa beds, they're also perfect for families travelling with children.

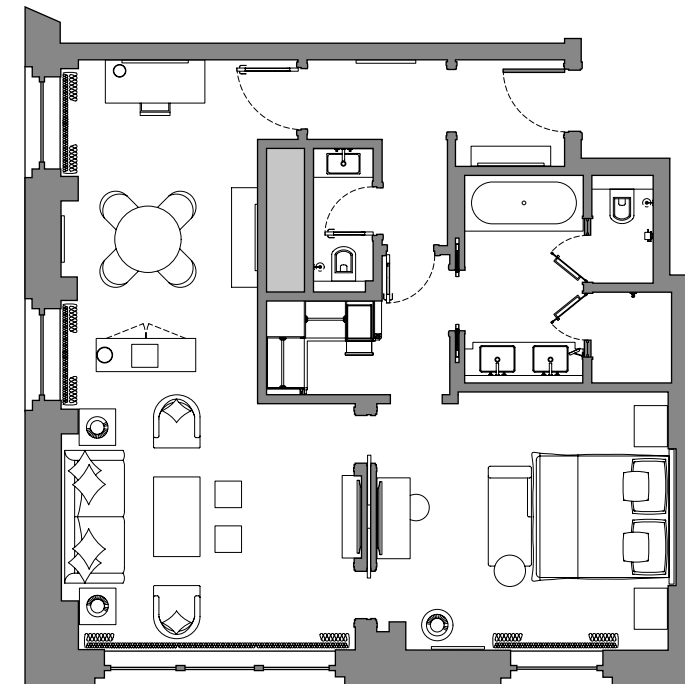


Classic Suites
Total 4
60m² (660 sq ft)



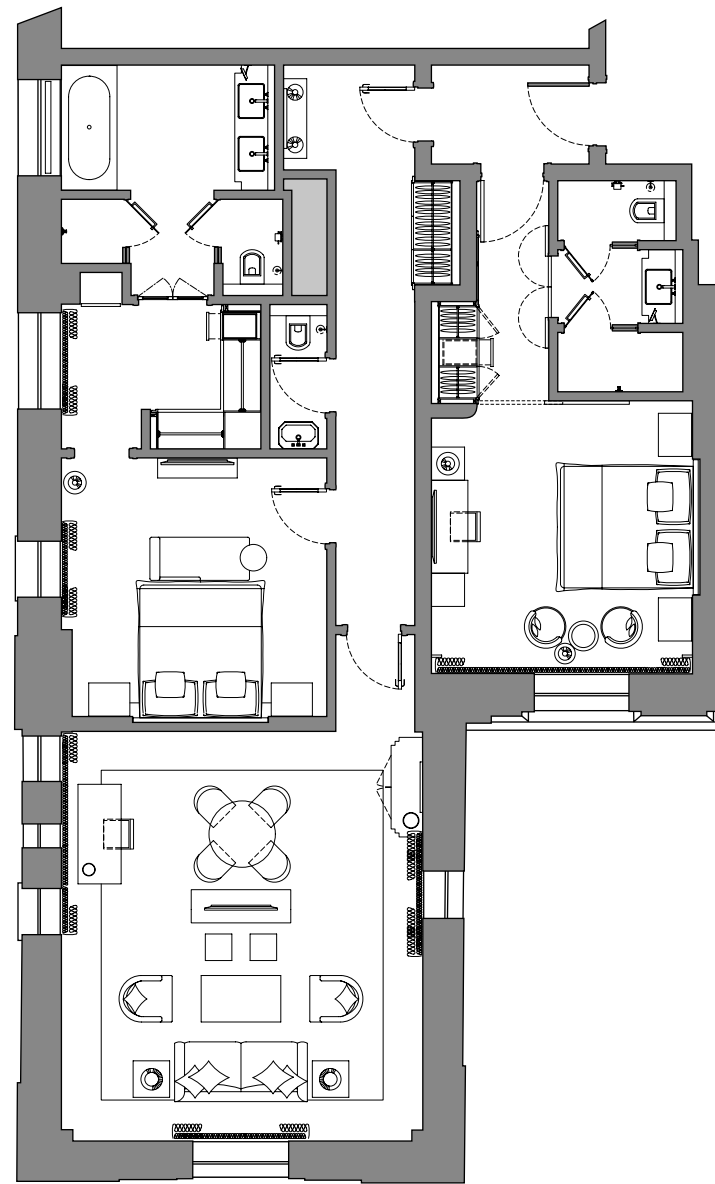
MAYFAIR SUITES

Each of The Beaumont's largest one-bedroom suites has its own unique layout, but all look over Brown Hart Gardens. Silks, mohair velvets, bronze detailing and subtle period patterns create a calm, relaxing environment for business or pleasure.



Mayfair Suites
Total 4
81 - 90m² (870 - 969sq ft)

A typical floor plan



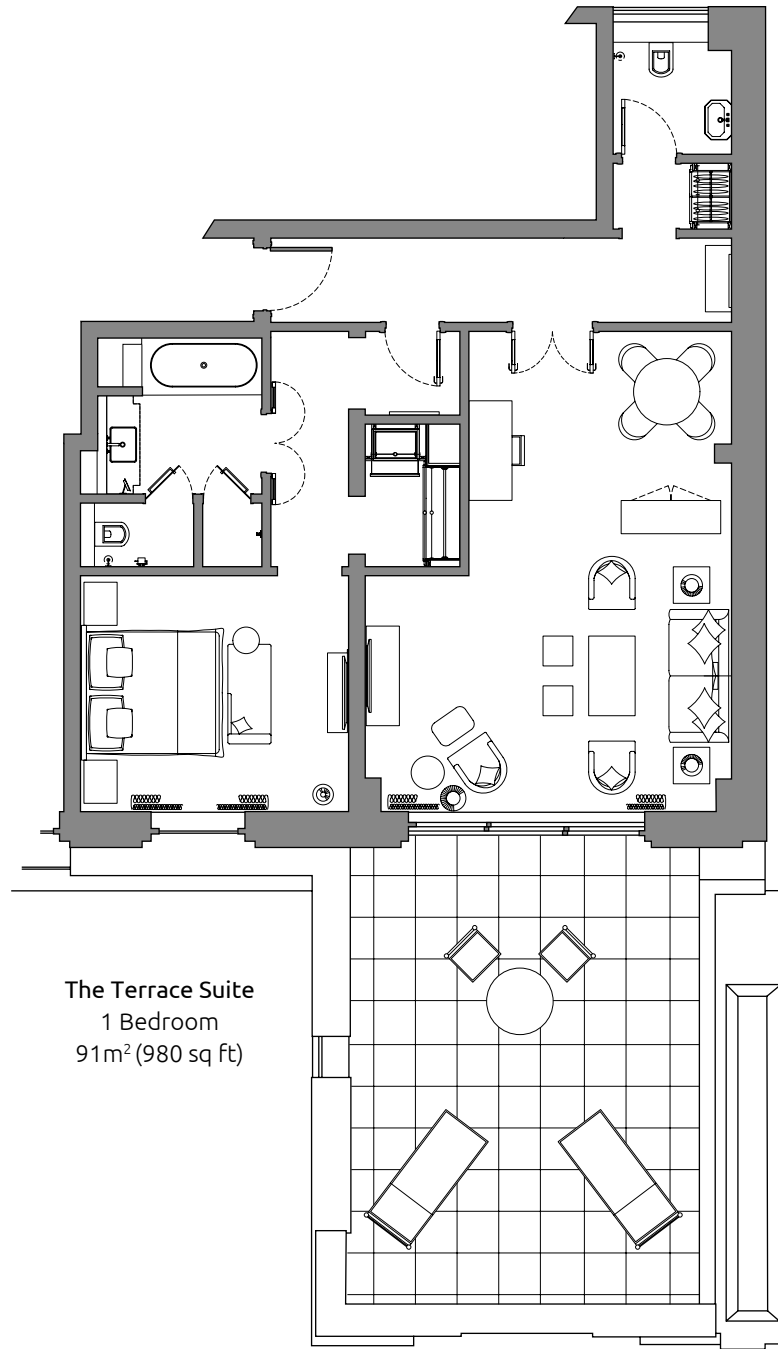
A Mayfair Suite
2 Bedrooms
122m² (1,315 sq ft)



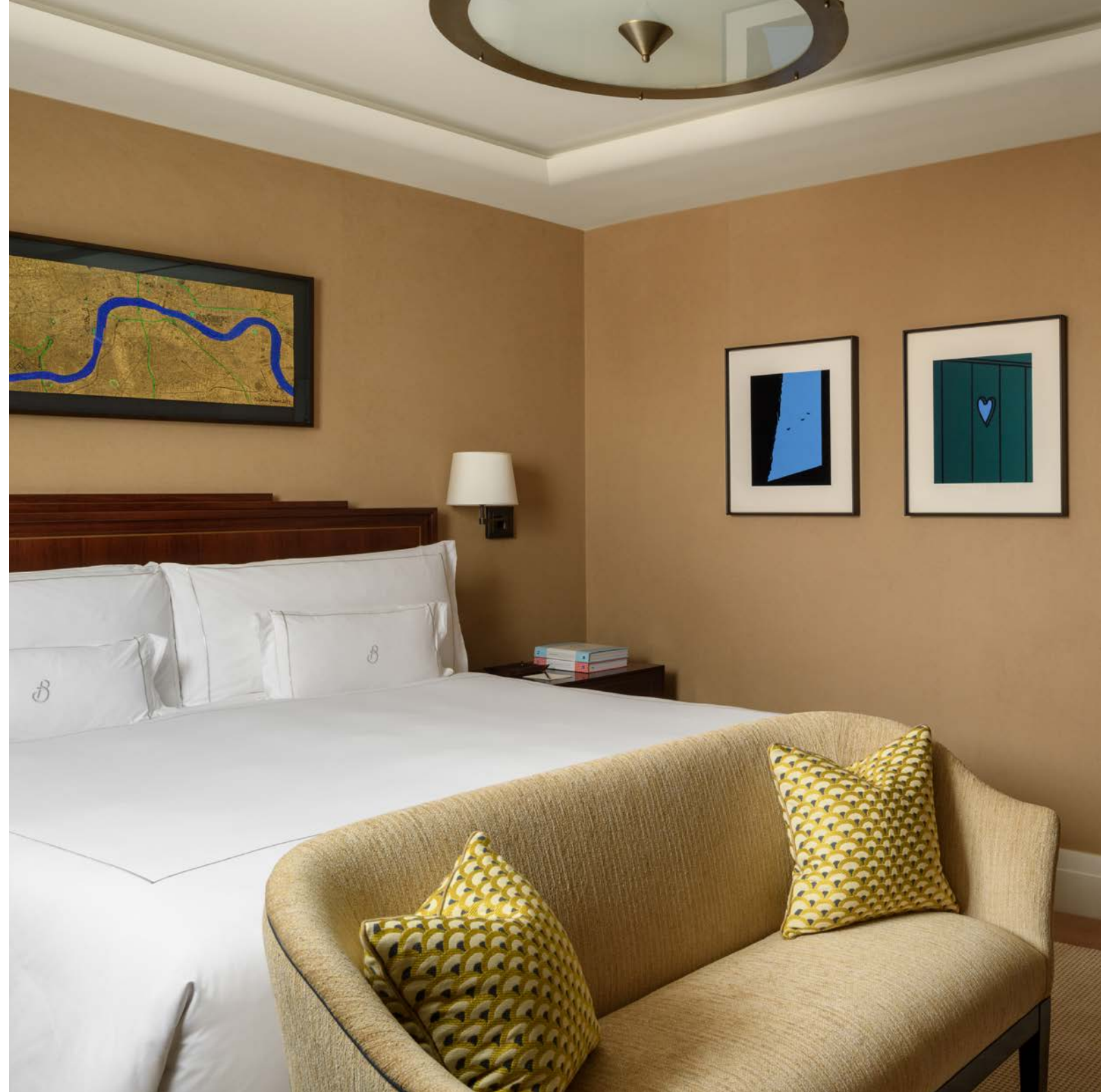
THE TERRACE SUITE

A large one-bedroom suite, ideal for entertaining, with a generous, very private terrace overlooking Brown Hart Gardens and sweeping views towards the City of London. The comfortable sitting room provides ample space for relaxing, dining and working, or even playing a round of chess on the brass-detailed, antique lacquered games table.





The Terrace Suite
1 Bedroom
91m² (980 sq ft)



THE ROOSEVELT

The Beaumont's presidential suite, which can be opened up to incorporate five bedrooms, evokes the glamorous era of the great Transatlantic liners. With an expansive sitting room and a separate dining room seating eight, plus a pantry kitchen and guest bathroom, it features a large terrace overlooking Brown Hart Gardens.

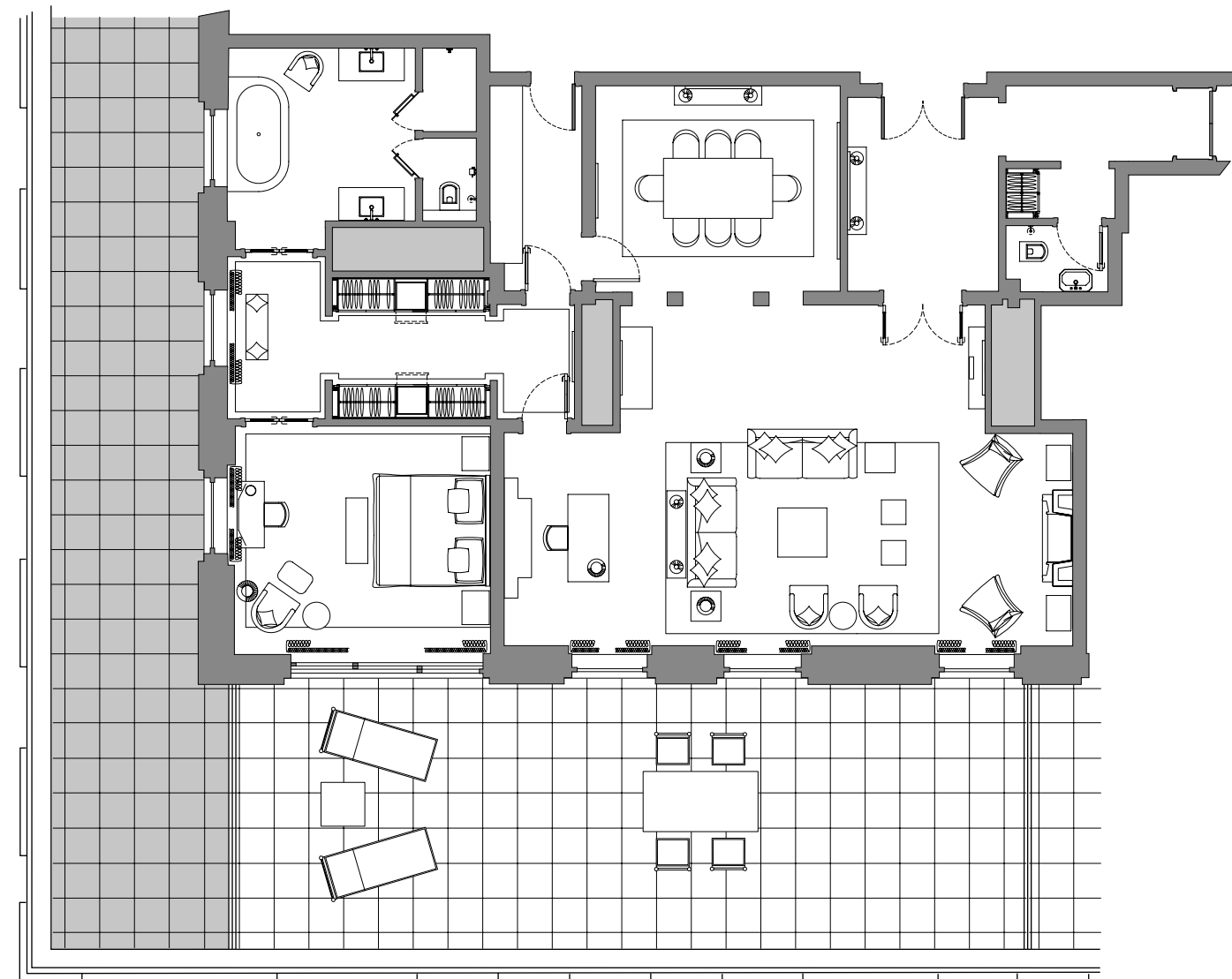
By the end of 2023, it will have been completely transformed under the creative direction of The Office of Thierry Despont. The newly redesigned and refurbished suite will boast a rich mix of bespoke furnishings, antique bronze glass and Art Deco furniture, as well as an outstanding collection of modern art.

Hugely versatile and supremely comfortable, the suite can also be arranged to incorporate the entire presidential floor of the hotel, in total privacy and security.

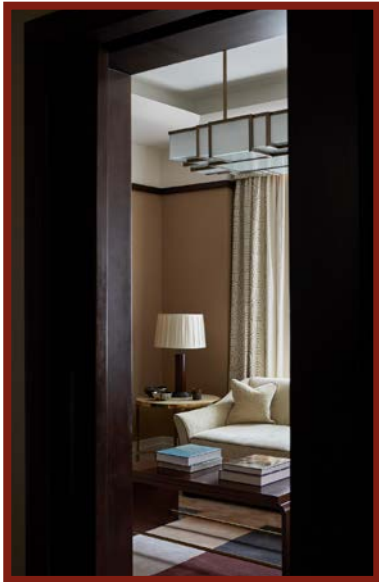
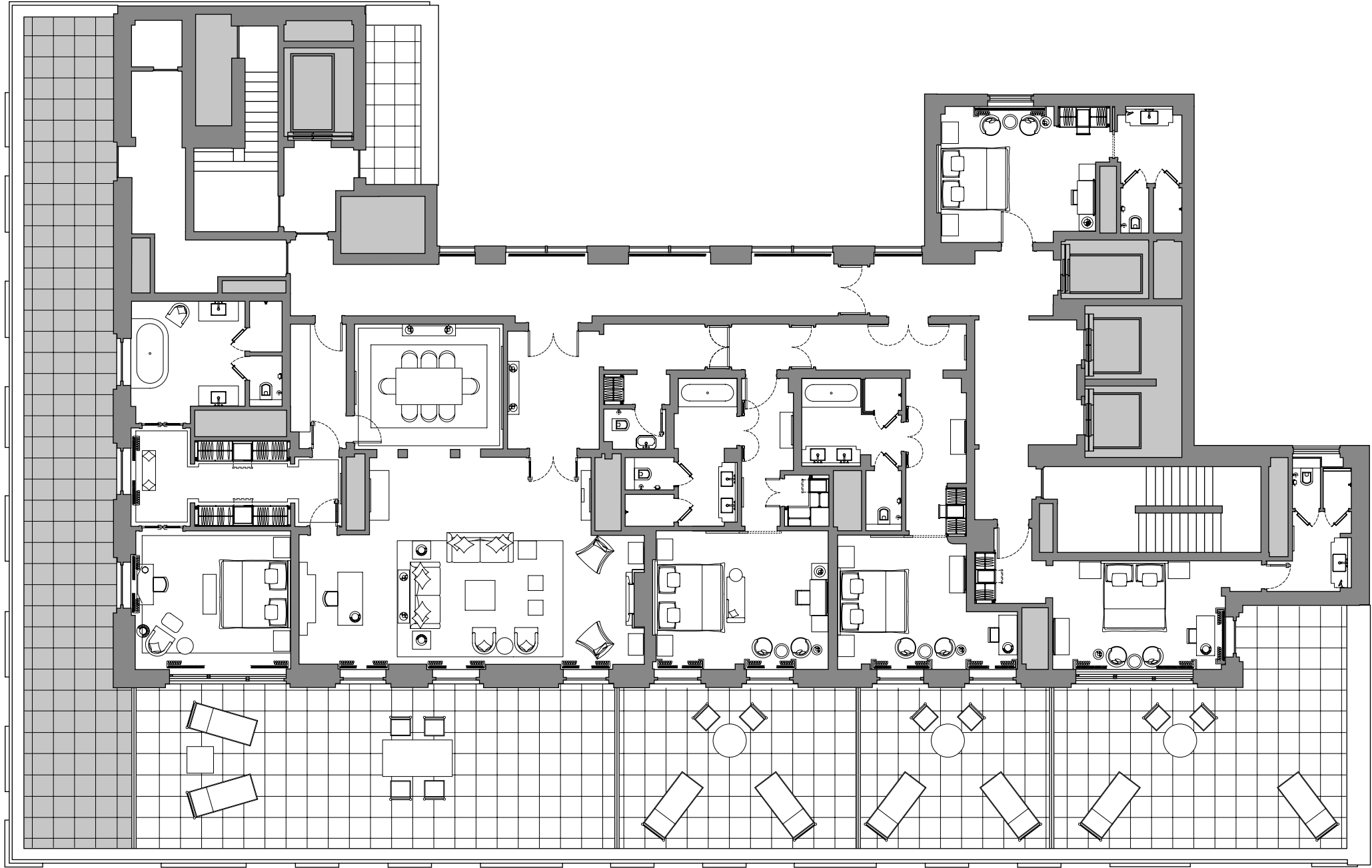


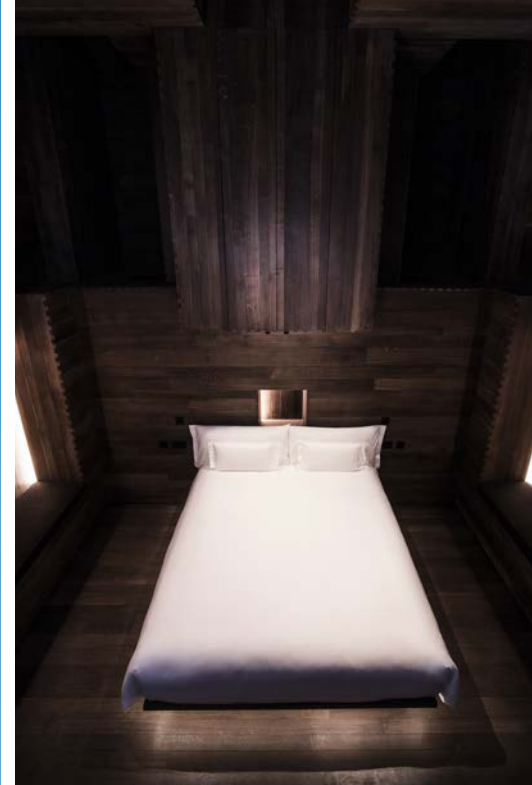


The Roosevelt
1 Bedroom
169m² (1,820 sq ft)



The Roosevelt
5 Bedrooms
606m² (6,525 sq ft)





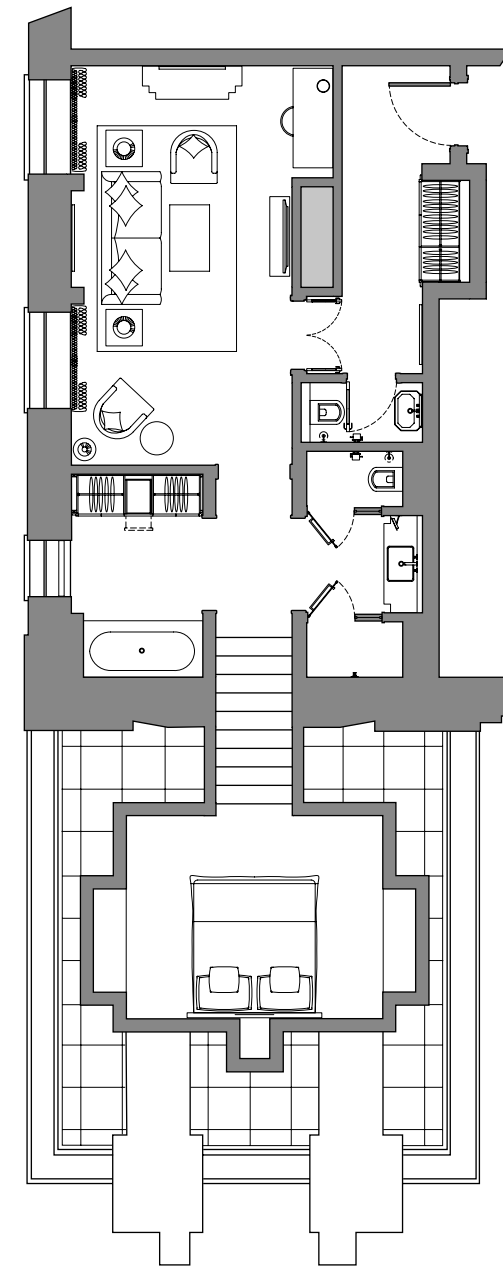
ROOM

Antony Gormley's ROOM forms the bedroom of a single suite. An alluring, mysterious space, its creation allowed the artist to 'sculpt darkness', encouraging its guests to enjoy a meditative moment of withdrawal from the busy world outside.

Gormley's ROOM is both a monumental cuboid sculpture based on the artist's body and an architectural extension to the hotel. The interior, entirely clad in dark fumed oak, is approached by nine white marble steps through a black velvet curtain from a strongly contrasting white marble bathroom.

Adjacent to ROOM is a sitting room with large hallway and bathroom, decorated, like all the rooms in The Beaumont, in a discreet Art Deco style.

ROOM
by Antony Gormley
A one bedroom suite
69m² (742 sq ft)



BEDROOMS AND SUITES

50 Classic , Superior and Premier rooms

11 Studios

4 Classic Suites

4 Mayfair Suites

ROOM by Antony Gormley – a one bedroom suite

The Terrace Suite

The Roosevelt Suite – can be configured as a one, two or three bedrooms suite, or up to 5 bedrooms encompassing the entire Presidential Floor

All guests enjoy complimentary

- daily Beaumont Baker’s Basket ~ home-made viennoiseries, seasonal preserves, coffee or tea, and juices;
- fresh organic coffee, teas, soft drinks & snacks from the in-room bar;
- high-speed wi-fi throughout the hotel;
- interactive film & music on demand;
- access to our in-house digital media platform for a huge selection of local and international newspapers, magazines, podcasts & more;
- local & national landline telephone calls

All rooms and suites have dual-line telephones, voice messaging, personally controlled air-conditioning; windows that can be opened, & laptop safes

All rooms are non-smoking

A number of rooms and suites are interconnecting

Some are designed as disability accessible rooms



DINING

GATSBY’S ROOM

All day dining and afternoon tea lounge

Open every day, from early until late

THE COLONY GRILL ROOM

Open every day, from early until late

LE MAGRITTE BAR & TERRACE

A classic American bar

Open every day, from breakfast until the early hours

PRIVATE DINING AND MEETINGS

THE LOTOS ROOM

18 covers for a board meeting

45 covers for a private breakfast /lunch /dinner

45 covers theatre style

60 covers for a drinks reception

SPA AND HAMMAM

A spa with steam room, sauna, traditional hammam table, treatment rooms, a large relaxation area and a grooming salon

THE GYMNASIUM

Complimentary use for guests, 24 hours a day

SERVICES

Chauffeur-driven courtesy limousine for emissions-free drop-offs in the local area

Valet parking

Full concierge services

24 hour in-room dining

LOCATION AND TRANSPORT

Located in the very centre of Mayfair, within a few minutes’ walk of Selfridges on Oxford Street, Bond Street, Mount Street, Grosvenor Square, Berkeley Square and Hyde Park.

The theatres of London’s West End are 5-10 minutes by car. The City of London is 20 minutes by car.

AIR

Heathrow Airport 35-55 minutes by car/17 miles

Gatwick Airport55-90 minutes by car/28 miles

City Airport.....30-45 minutes by car/10 miles

TRAIN

St Pancras Eurostar terminal 10-15 minutes by car

Paddington Station
(Heathrow Express) 6-10 minutes by car

Victoria Station
(Gatwick Express)..... 6-10 minutes by car

LOCAL TRANSPORT

Bond Street

Underground Station 5 minutes walk

CAR

The Beaumont offers valet parking



RESERVATIONS

www.thebeaumont.com

reservations@thebeaumont.com

Telephone number: +44 20 7499 1001

THE BEAUMONT

BROWN HART GARDENS

MAYFAIR

LONDON W1K 6TF

Info@thebeaumont.com

www.thebeaumont.com

